


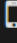


Kanopy Overview

Details

Here's how it works:

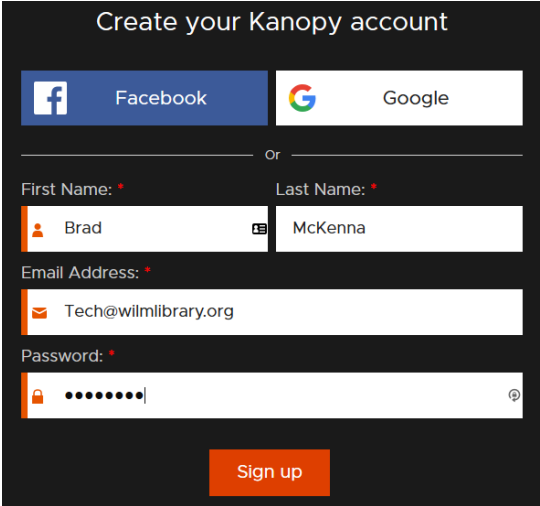
-  **Up to 10 films per month**
Your library has generously given you 10 play credits every month.
-  **3 days to watch each film**
Once you press play on a film, you have 3 days to view it as many times as you like without using another play credit.
-  **Play credits reset on the 1st of the month**
Once you have reached your quota of films, you will not be able to play any films until the new month starts when you will be given a fresh quota of 10 play credits again.
-  **Any device**
You can access Kanopy from any device, including iOS, Android, Apple TV, Roku, Chromecast, and many more! See all supported mobile and TV apps here.

Signing Up

1. Go to <http://wilmlibrary.kanopy.com>
2. Click **SIGN UP**

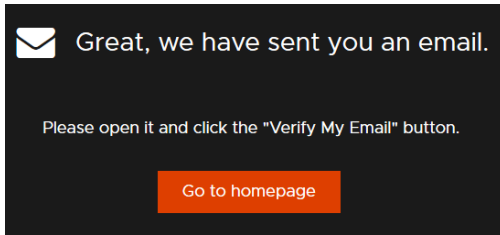


3. Type your **First and Last Names**
4. Type your **Email** and **create a password**
5. Click **Sign up**

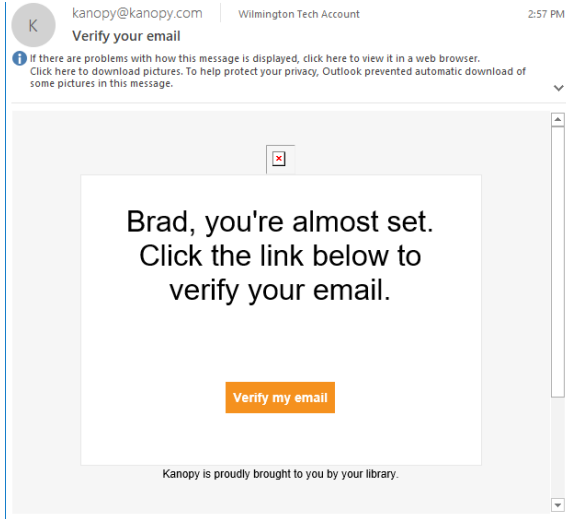


The image shows the "Create your Kanopy account" form. It includes social login options for Facebook and Google. Below these, there are input fields for "First Name" (containing "Brad") and "Last Name" (containing "McKenna"). The "Email Address" field contains "Tech@wilmlibrary.org". The "Password" field is masked with dots. A "Sign up" button is located at the bottom of the form.

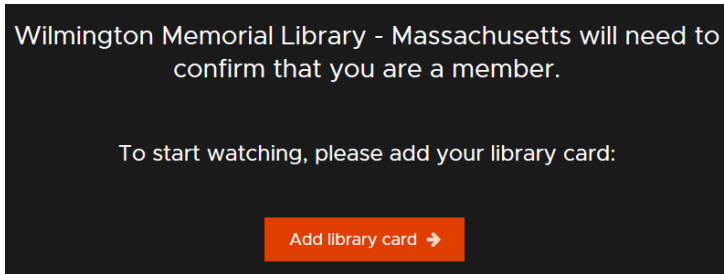
After you get the message below, open your **email**.



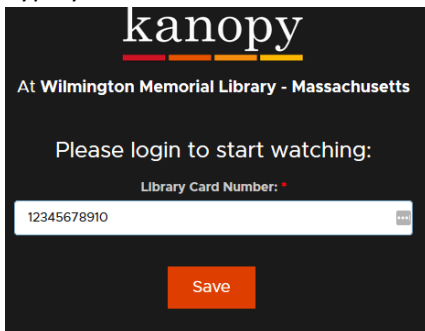
6. Click **Verify my email**



7. Click **Add library card**

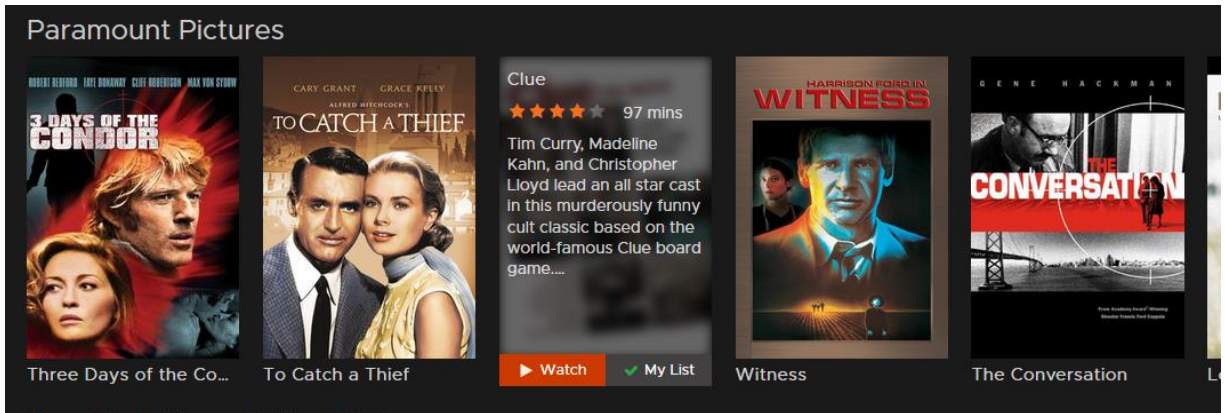


8. Type your **card number** and click **Save**



Watching

1. Hover over **the movie** and click **Watch**



2. Click the **play button**



Anatomy of the Player

